

Triitopia.01– Product Specification



Triitopia.01

Kids will even fully enjoy the slightly smaller adventure world. Children that ascend through the spatial net to the very top can swiftly descend the tunnel-slide all the way to the ground. Alternatively, the new net tunnel on the facade can be used as an ascent or descent option.

Triitopia.01 – at a glance.

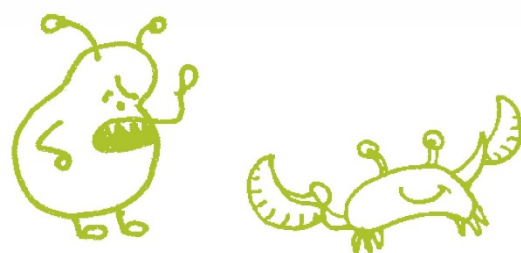
Product Family:	Greenville	Number of Foundations:	Upon request
Item Number:	90.293.379	Concrete Volume C20/C25:	Upon request
Children's Age:	5+	Number of skilled installers required:	Upon request
Fall Height (DIN EN 1176):	1.5m (6'-0")	Installation Time without foundation:	Upon request
Length x Width x Height:	8.3 m x 14.8 m x 7.8 m (27'-4" x 48'-8" x 25'-10")	Dimensions of largest part:	Upon request
Protective Surfacing Area (DIN EN 1176):	11.3 m x 18.0 m	Weight of heaviest part:	Upon request
Protective Surfacing Area (ASTM 1487):	12.3 m x 19.0 m (40'-4" x 62'-4")	Shipping Volume:	Upon request
Minimum space required DIN EN 1176:	70.5 m²	Spare part guarantee:	Upon request
Minimum space required ASTM 1487:	118.5 m² (1276 sf)		

Berliner

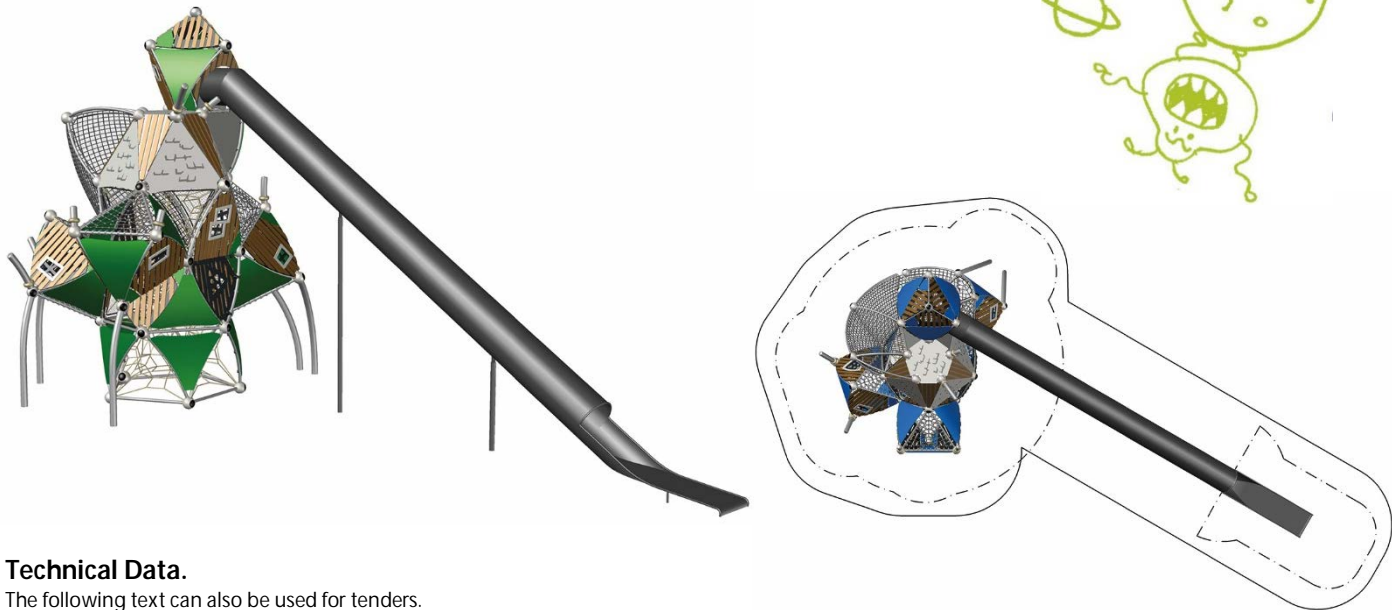
Berliner Seilfabrik
Play Equipment Corporation
96 Brookfield Oaks Drive, Suite 140
Greenville, SC 29607

T + 1 864 627 1092
F + 1 864 627 1178

www.berliner-playequipment.com
info@berliner-seilfabrik.com



Tritopia.01– Product Specification



Technical Data.

The following text can also be used for tenders.

Posts:

Steel pipes \varnothing 133 mm (5'-1/4"); wall thickness 5 - 10 mm (3/16" - 3/8") with a round cast aluminum post top; anti-corrosion treatment and color finish: sandblasting and solvent-free zinc-/ epoxy-/ polyester-process

Tube framework:

A combination of straight and bended stainless steel Frameworkx-®tubes, \varnothing 60,3 m (2 3/8"), material AISI304 (DIN 1.4301). The tubes are connected to build a space framework with a triangular footprint.

Nodes:

Frameworkx-aluminum ball connectors; \varnothing 250 mm (9'-13/16"); anti-corrosion treatment and color finish: sandblasting and solvent-free zinc-/ epoxy-/ polyester-process; incorporating an ASTEM TT net tensioning system; securely closed with durable EPDM- caps

Special netting:

Net structure across multi-levels, rope crossing points are localized with durable, forged aluminum-alloy cloverleaf rings, joint-ferrule, connecting-clamps and barrel-ferrule (no plastic connections); in situ-replaceable rope strands

Ropes:

U-Rope®-round strand ropes with galvanized and covered wires, external strands with non-abrasive UV-resistant Polyester-yarn (no Polypropylene)

Planar netting & Net tunnel:

Mesh size minimum 250 x 250 mm (9-4/5"); rope crossing points localized by durable, drop forged aluminum ballknots (no plastic); accesses staggered arranged

Roof- & Wallpanels:

HDPE-panel (roof and walls), thickness 10 & 19 mm (3/8" & 3/4"), panel connected to steel pipes with cast aluminum panel clamps; non-skid HPL-panel (baseplates), thickness 19 mm (3/4")

Bamboo panels:

Bamboo strips 90 mm, (3'-1/2") mounted at a particle board made from HDPE, 19 mm (3/4") thickness, rounded edges, mounted with aluminum plate clamps to the tubes of the framework

Safety net frames:

Stainless steel tube frames with safety net made of stainless steel rope \varnothing 4 mm (1/6"), mesh size 40 x 40 mm (1 6/11" x 1 6/11"), connected to the structure with two-part cast aluminum connecting clamps

Striaight concave tubeslide:

Slide made of stainless steel, the cheeks are welded with stainless steel handrails, afterwards smoothed and polished; connected with aluminum-slide clamps



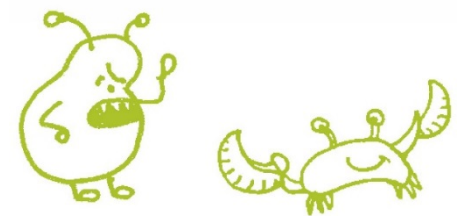
Berliner Seilfabrik
Play Equipment Corporation
96 Brookfield Oaks Drive, Suite 140
Greenville, SC 29607

T + 1 864 627 1092
F + 1 864 627 1178

www.berliner-playequipment.com
info@berliner-seilfabrik.com

Triitopia.01– Product Specification

The Triitopia also offers endless combinations of all Berliner play units and has numerous entry variants and types of slides.



Berliner Seilfabrik
Play Equipment Corporation
96 Brookfield Oaks Drive, Suite 140
Greenville, SC 29607

T + 1 864 627 1092
F + 1 864 627 1178

www.berliner-playequipment.com
info@berliner-seilfabrik.com